



RANGEFINDER

Englewood Camera Club Newsletter

Vol 60, No 3

March 2012

Serving South Denver Metro & Foothills since 1952

A member of Photographic Society of America & Colorado Council of Camera Clubs

PHOTOGRAPH OF THE MONTH



Mystical Buddha
by Sally Brown

INSIDE...

Club Information & Officers	2
Competition Winners	2, 7
President's Message	3
Presentation Recap	3
Outings, Events & Photo Ops	4
Competition Information	5
Call for Entries	7
Current Exhibitions.....	8
New Members	8
Tips & Tricks.....	9
PSA News	9
Bulletin Board	9



CLUB INFORMATION

MONTHLY MEETINGS

Unless otherwise specified, meetings are held on the second Tuesday of the month at the Greenwood Village Community Room, 6060 S Quebec St, Greenwood Village, CO. Meetings start at 6:30pm. Additional program meetings are held on the third Wednesday of the month at Englewood Library, beginning at 6:00pm.

GUESTS AND NEW MEMBERS

Guests are always welcome to our monthly meetings. Guests may bring photos to be evaluated but ribbons can only be won by members.

MEMBERSHIP DUES

Individual- \$25, Student- \$15, Family- \$30

ECC OFFICERS FOR 2012

President: Gary Gray
VP Programs: Sally Brown
VP Competition: Larry Stearns
Secretary: Cathie McLean
Treasurer: Randy Moore

APPOINTEES FOR 2012

Membership Chair: Susan Propper
Publicity Chair: Rod Troch
Hospitality Chair: Ellie Colitti
Score Keeper: Larry Stearns
Council Rep.: Billie Campbell & Quade Smith
PSA Rep.: Fred Luhman
Web Master: Rod Troch
Photo Editor: Billie Campbell
Rangefinder Editor: Brenda Frezeman
Projectionist: Fred Luhman
Executive Committee Members-At-Large:
Steve Johnson & Jim Esten

WEBSITE

www.Englewoodcameraclub.net

CLUB COMPETITION FEBRUARY 2012



Thanks to Ricardo Muino, our judge for this month's competition. The subject was Creative (Obviously Altered Reality).

MONOCHROME PRINT WINNERS

- | | | |
|---|-----------------|----------------------|
| 1 | Susan Propper | Into the Music |
| 2 | Sally Brown | Misty Four Worlds |
| 3 | Brenda Frezeman | Full Moon over Bryce |

COLOR PRINT WINNERS

- | | | |
|----|---------------|----------------------|
| 1 | Susan Propper | Self Reflection |
| 2 | Sally Brown | In a Mystical Forest |
| 3 | Susan Propper | Dizzy Fingers |
| HM | Craig Lewis | Some Men are Puzzles |

DIGITAL WINNERS

- | | | |
|----|-----------------|----------------------|
| 1 | Sally Brown | Mystical Buddha |
| 2 | Lee Urmey | Nearly Moonrise |
| 3 | Susan Propper | Motherboard |
| HM | Jimmy Doolittle | Just Opened |
| HM | Fee Chin | Acrobatic Aeroplanes |
| HM | Sally Brown | Running Back in Time |

Check out all the winning images on our website at www.Englewoodcameraclub.net.

“ The single most important component of a camera is the twelve inches behind it. ”

- Ansel Adams

The above is one of many photography-related quotes collected by Jim Esten. More will be featured in future issues.

PRESIDENT'S MESSAGE



by Gary Gray

Hello to my fellow Englewood Camera Club Members.

The executive committee will be finalizing the 2012 budget this month. At last count, the club had roughly \$2,500, not including dues received in February. We'll be soliciting ideas for items the club may be needing in 2012, so forward your suggestions as you think of them.

The new meeting venue at the Englewood Public Library is gaining popularity and it looks like it is going to be a hit with the club members. We're looking for club members who would like to do in-house presentations this year at the new venue, so volunteer yourself to Gary or Sally and tell us what you'd like to do. We'll find an open month and put you on the schedule.

The executive committee is also looking at modernizing the club website. We've identified most of the problems and have been moving forward on putting together a mirror test site. Once we have something tangible, we'll let everyone test drive it and provide feedback. Rod assures the committee that it can be finished by the end of April. The true goal is to get it done this year. The old site is confusing to the general public and can use a makeover to accommodate the new things the club is doing this year and may be doing in the future.

As I've stated before and will reiterate, we aren't looking for "more of the same." We're going to give you "the same and more." Sitting still and doing nothing to move the club into the future is not on the agenda this year. I promise you.

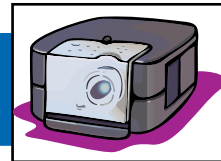
UPCOMING MEETING:

The next meeting will be held on Tuesday, March 13th at the Greenwood Village Community Room. The presenter will be Catherine Etherton.

The competition subject is Open + PSA Open.

Mary Goodman will bring snacks for the meeting and Brenda Frezeman will provide drinks.

PRESENTATION RECAP



For those of you who missed the February meeting, Ricardo Muino showed us a presentation of his recent work in Pin-Up Photography. Our competition was his first foray into judging, which he found difficult. The following is a letter he wrote to the club:

It was a great honor to be selected as the presenter and judge at the ECC photography contest for the month of February. The works presented were truly extraordinary, making my tasks as a judge exceedingly difficult. To be honest, the level of talent far exceeded my already very high expectations for the club and I feel that I could have probably done a better job providing feedback.

While I believe that feedback is an important tool for learning and improving one's understanding of the basic rules and status quo, I also understand that art is an individual form of expression. Many great artists and visionaries, for one reason or another, are initially overlooked or not recognized during their lifetime. For example, Francesca Woodman, a now-famous, Denver-born photographer continues to be the subject of much attention years after committing suicide at the age of 22. In late 1980, Woodman became depressed due to lack of receptiveness to her work and a broken relationship. Today, however, Woodman's distinct style is being emulated by more than a handful of New York fashion photographers leaving no doubt that her work was well ahead of its time.

Feedback should be taken with a grain of salt. Those who have a vision should not be dissuaded by the critics. In an American Masters PBS interview, the iconic writer, director, actor, comedian, and musician, Woody Allen, asserts that he typically does not read reviews. Rather, Allen insists that he is usually buried in his next project well before finishing the last. Allen also does not attend award ceremonies, because, in his words, "at most of these formal events, people just want to tell you what you want to hear."

Overall, I believe that we, as artists, should always try to improve our work. The critics can give us an avenue, but, in my humble opinion, art is beautiful because each work is a unique individual expression. Accordingly, I hope that you all take my praise and criticism with a grain of salt and that you submerge your efforts into your next big project.

-- Ricky

<http://rickybrowneyes.com>



ICE CASTLES AT SILVERTHORNE

Silverthorne, CO

If you haven't visited the ice castles yet, you still have time. They'll be there until the temperatures get too warm and the ice melts. These massive and dynamic ice structures reach up 40' high. Hours are Monday to Thursday from 11:00am to 9:00pm, Friday 11:00am to 10:00pm and Saturday 10:00am to 10:00pm. Closed Sundays.

Submitted by Steve Johnson

MOONRISE/SUNSET CROSS COUNTRY SKI SOCIAL

March 2nd

Pagosa Springs, CO

Cross country skiers at sunset/moonrise could make for some interesting shots. For more information, call 970-946-7225 or visit the website at www.pagosanordic.com.

Submitted by Lee Urmy

SANDHILL CRANES

March 9th-11th & 16th-19th

Monte Vista, CO

The same birds that gather in Bosque del Apache visit Monte Vista from mid-February through early April. The annual festival is the weekend of March 9th-11th. Gary Gray is planning a trip for the following weekend, March 16th-18th, leaving Friday morning and returning Monday morning. Contact Gary if interested. For info, visit www.fws.gov/alamosa/Cranes.html

Submitted by Gary Gray

GREATER PRAIRIE CHICKEN TOUR

March 23rd to April 15th

Wray, CO

This event was started in 1994 in order to educate the public about these at-the-time endangered birds. If you're a birder, would like to learn about the greater prairie chicken, or just capture some unusual photos, check this out. Call 970-332-348 or visit www.wraychamber.net/gpct2.php

Submitted by Lee Urmy

RIO GRANDE SCENIC RAILROAD

March 31st

Alamosa, CO

Here's a rare chance to photograph the Rio Grande Scenic Railroad going over historic LaVeta Pass. The train will be running from Alamosa to LaVeta on those dates and will be making special stops on the LaVeta Pass for photographs. For more information, go to www.riograndescenicrailroad.com/events/photo-enhanced-trains.html

Submitted by Gary Gray

ZOO TEST DRIVE

April 28th, 9:00 to 4:00

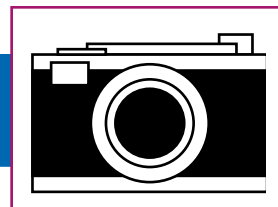
Denver, CO

Want to try out a new body or lens before you buy it? Then head to the Denver Zoo on April 28th for Mike's Camera's next zoo test drive. At this one-day event you can borrow lenses and camera bodies such as a 600 f/4 AF-S, a Nikon D4 body or perhaps a D800 body (depending on its release date). Other manufacturers' cameras and bodies (including Canon) will also be available. Borrowing a lens or camera body is free, but is usually limited to one hour of use.

Submitted by Lee Urmy

ADDING EVENTS TO OUR WEBSITE

Members, we welcome you to add an event to the ECC calendar. This can be any event that's going to happen in a couple of days or a couple of months. You may add anything from photo shoots, photo showings to photo contests, as long as it has to do with photography. Login to the Members Only area, click on the ECC Event Calendar, then simply add the date and description of the event. After you've added the event, don't forget to send out an e-mail letting everyone know it's there! Adding known photographic events/shoots is a great way to help everyone do what they like to do the most... take photos! Also alert the Rangefinder editor so she can mention the event in the newsletter.



ECC MONTHLY 2012 COMPETITIONS

Month	Subject
January	Open + PSA Open & PSA Creative
February	Obvious Altered Reality + PSA Creative
March	Open + PSA Open
April	Motion + PSA Creative
May	Open
June	Night
July	Open
August	Close-Up
September	Open + PSA Open
October	Planes, Trains, Autos + PSA Creative
November	Open + PSA Open
December	End-of-year judging

You may submit a total of four photographs each month, with no more than two entries in any one category. For example: two in monochrome prints and two in digital. Or one in monochrome prints, one in color prints and two in digital.

PRINTS

For color and/or monochrome prints, fill out two photo entry forms. Attach one entry form to the back of the print and show its orientation (upper left hand corner). Give the other form to the scorekeeper. Blank entry forms may be found at <http://www.inglewoodcameraclub.net/cgi-bin/competitions.cgi>

NOTE: Please bring entries 15 minutes prior to the start of the meeting with the completed Monthly Competition Forms.

DIGITAL PROJECTED IMAGES

Submit up to two JPG image files via the Digital Projection Monthly Upload page of the club website no later than Saturday, March 10th. Your image files must adhere to the Digital Projection Requirements and Guidelines PDF which is available from the Digital Projection Instructions page of the club website. The website upload page will automatically generate filenames for club use, check pixel dimensions, and check JPG file size.

The width of the image must not exceed 1024 pixels and the height must not exceed 768 pixels (1024x768). The file size may not exceed 350KB.

ASSIGNED SUBJECT RULES

On evenings when we have what we call an Assigned Subject, (e.g. something other than Open), the rules about how recently the image has to have been taken are as follows: If a member enters two images in a category (such as monochrome prints), one of them must have been taken within the previous 24 months. If you enter just one monochrome print, one color print and one digital image, then all three must have been taken within the previous 24 months.

ALTERED VS UNALTERED

We require that an image is comprised of one or more photos taken by the maker. Additional manipulation is okay. There is no distinction between altered and unaltered images for competition.

PSA ENTRIES

Only one image may be entered per member. Six slides will be selected by the judge to represent ECC in four competitions for the 2011-2012 season in the CPID Open and CPID Creative interclub competitions. Your image may be on any subject, any technique, taken anytime, and it need not have been entered in ECC monthly competitions at any time. And it makes no difference if it has won an award of any kind or not. except if it has won an award (ribbon) in a previous PSA CPID Digital Interclub Competition, it is ineligible. Also, a specific image may be submitted only one time in the same season. For PSA's definition of Creative, go to: <http://psa-photo.org/divisions/cpid/creative-interclub/>.

Submit your ONE best image for the Open category via the Digital Projection Monthly Upload page of the ECC website no later than Saturday, March 10th. Your image file must be in accordance with

the image requirements of the “Digital Projection Requirements and Guidelines” document which is available from the Digital Projection page of the ECC website. The website upload page will automatically generate filenames for club use, check pixel dimensions, and check JPG file size.

YEAR END COMPETITIONS

The Year-End and Versatility Competitions are presented during the year-end banquet. A panel of three judges will determine the awards. For more information on these competitions, refer to the Competition Information Tab then click on the Membership Information document, available on the ECC website.

REGULAR YEAR-END COMPETITION

Entries must have been entered in the ECC monthly competitions during the current calendar year; however, they need not have won an award. First, second, third, and honorable mention awards are determined for each category. Print entries will be due in late November (exact date to be determined). Identify your digital entries via the Digital Projection Year-End page of the club website by the date to be specified in November. Digital entries are saved on the projectionist’s computer throughout the year, as you enter them each month. A member only has to identify entries by the title and month entered. Entries for digital and prints may be submitted in each of the following categories:
Monochrome Prints: Nature-3 entries, Open-3 entries
Color Prints: Nature-3 entries, Open-3 entries
Digital Projected: Nature-3 entries, Open-3 entries

VERSATILITY COMPETITION

The versatility competition subjects for 2012 are:
Street Photography
Food
Birds in Flight
Silhouette
The Subject is Red

Entries have no time limit and need not have been submitted in a monthly competition. However, no image that was part of a group of versatility images that won an award in a previous versatility competition can be entered. Enter one photo for

each subject in both print and digital. All five entries must be in the same format (printed or digital). The photographs are judged by category, with each one being awarded points by the judges. The points are then totaled for each person. The total number of points received, by person, determines awards. First, second, and third place awards are determined for both print and digital.

Print entries will be due in November (exact date to be determined). Submit your digital entries via the Digital Projection Year-End page of the club website. The deadline will be specified in November.



REFRESHMENTS NEEDED!

We all enjoy the refreshments at our meetings. It's nice to take a break, talk with fellow members and enjoy a snack. We need volunteers to bring those snacks and drinks. And now that we have two meetings a month, we need even more volunteers. Please consider helping out, it's an easy way to support your club.

Ellie Colitti, our hospitality chairperson, has sent out a list of open dates. Please pick one that suits your schedule and e-mail her at elliecolitti@comcast.net.

END-OF-YEAR WINNERS



The end-of-year competition, held in December, was judged by Nancy Myer, Helen Tyler and Fritz Penning. Members submitted up to 18 of their entries from the year's monthly competitions for a year-end competition. The winners were:

MONOCHROME PRINT NATURE

- 1 Jim Lee A Fly Tier's Raw Material
- 2 Jim Lee A Stark Landscape
- 3 Susan Propper Fern Frond

MONOCHROME PRINT OPEN

- 1 Susan Propper Downward Spiral
- 2 Brenda Frezeman Old Glory, Flying High
- 3 Jim Lee Cleaning My Watercolor Brush

COLOR PRINT NATURE

- 1 Jim Lee Land Amid the Clutter
- 2 Susan Propper Nature's Symmetry
- 3 Susan Propper The Pollinator

COLOR PRINT OPEN

- 1 Susan Propper Architectural Abstract
- 2 Cathie McLean Portrait of a Jedi
- 3 Jim Lee Patterns in Nature

DIGITAL NATURE

- 1 Ken Farman I Love a Pretty Day
- 2 Jim Lee White on White
- 3 Lee Urmey Chickadee

DIGITAL OPEN

- 1 Fred Luhman Mystic Woods
- 2 Craig Lewis Marching to the Sunset
- 3 Craig Lewis Five Drops

VERSATILITY PRINT

- 1 Quade Smith

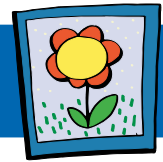
VERSATILITY DIGITAL

- 1 Lee Urmey

PHOTOGRAPHER OF THE YEAR

Congratulations to Susan Propper, who was named 2011 Photographer of the Year. Susan received the club's traveling trophy, which is awarded to the member with the most accumulated points awarded monthly for all categories during the year.

CALL FOR ENTRIES



LOUISVILLE ART ASSOCIATION

The Louisville Art Association has released their call for entries in the 21st annual National Juried Photography Show. The deadline for entries is May 9th and submissions are being handled only by CaFE (CallforEntry.org). The entry fee is \$35 for three images.

The show will run from June 30th to July 8th, with an opening reception on June 30th.

Submitted by Lee Urmey



Cathie McLean collects quotations and likes to combine them with her photos. This shot was taken at the Steamboat Springs hot air balloon stampede. The quote by Oliver Wendell Holmes is a great reminder to keep learning... about anything.

CURRENT EXHIBITIONS



EYE OF THE CAMERA

Several club members have work in Littleton's Eye of the Camera exhibit which runs from February 17th to April 1st at the Littleton Museum, 6028 S Gallup St. in Littleton. Top honors go to **Fee Chin**, who won Best of Show, Color for her image, *Summer Garden*. Fee will share the gallery next year with the black and white best of show winner for a two-person exhibit. Kudos also to **Eric Jones**, who won 2nd Place, Color for *Man from the Caucasus Mountains*. Other members with work on display are **Steve Johnson** and **Fred Luhman**. Congratulations to all.

Juror Andy Marquez said, "a photograph must capture the heart and soul of a scene in that brief moment in time when divine light and natural shadow converge. The result is an image that draws you in and holds you spellbound. In short, the photo becomes art."



Summer Garden
by Fee Chin

LONE TREE PHOTOGRAPHIC ART SHOW AND SALE

Englewood Camera Club is also well represented in the Lone Tree Photographic Art Show and Sale, which runs from March 3rd to April 29th. The show has a new home at the Lone Tree Arts Center, 10075 Commons Street. Members with photos on display include **Steve Johnson**, **Susan Propper**, **Fred Luhman** and **Fee Chin**. The opening reception starts at 3pm on March 3rd.

LITTLETON FINE ARTS GUILD SHOW

Steve Johnson was recently juried into the Littleton Fine Arts Guild and has two pieces in the current show, *Escape into Art*. This show runs through April 1st at the Depot Art Center Gallery located at 2069 W Powers Ave, Littleton. Show hours are 11:00 to 4:00 Wednesday through Sunday. Their facebook page is: <http://www.facebook.com/pages/Depot-Art-Center-and-Gallery/100316810094345>

NEW MEMBERS

Englewood Camera Club welcomes quite a few new members this month:

KEN & MARY RICHARDS



Ken, a retired aerospace engineer, is primarily interested in landscape, wildlife, and HDR photography. He enjoys traveling in their camper, particularly to places like BC, the Yukon, and Alaska. He and Mary have been to Alaska three times. Their trips last as long as three months. Mary is a retired high school teacher and realtor. Her spare time activities often involve volunteer work. Mary is most interested in landscape and macro nature photography.



CLAYTON & CAROLE VANDENBERG

Clayton and Carole gravitate mostly toward macro photography, fine art/creative photography, nature/travel photography (including landscapes/cityscapes, birds/animals, plants/flowers, weather, panoramics), light painting, and HDR. They enjoy joining other photographers on field trips, attending workshops, going to meetups, and going it alone. They like to learn so are dabbling in some other areas including people, products, food, and flash/strobes.

PAUL GANA

Deeply interested in nature and landscape photography, Paul is expanding into some natural abstract work as well. Additionally, he is a huge metal head; loud music and mosh pits are his thing. He is also involved in politics, promoting liberty mindedness.



Other new members include:
Bubba Dehn (Sue's husband)
Trudy Gray (Gary's wife)
Dee van Poolen

TIPS & TRICKS



SIMPLE ISO EXPLANATION

<http://www.petapixel.com/2012/02/21/a-simple-explanation-of-how-iso-works-in-digital-photography/>

This is very basic and unusual way of explaining ISO and noise in relation to digital camera sensors. And it's fun, too.

Submitted by Lee Urmy

CREATE YOUR OWN BOKEH SHAPE

<http://www.diyphotography.net/removing-the-mystery-from-the-heart-shaped-bokeh>

This link is to a 'How to' in making your own 'Bokeh' shapes for creating shaped bokeh in your photographs. 'Bokeh' is an out of focus light source within an image. Most generally they are round because of the round aperture of the lens. You can change those from round to any shape you desire by using a bokeh shape in front of the lens, like a filter.

Submitted by Lee Urmy

LINK YOUR WEBSITE TO THE ECC WEBSITE

As a member of ECC, you may have a link to your own photography website from the club's site. Please send an e-mail to socialmedia@englewoodcameraclub.net with the following information to get this accomplished;

- 1) The link (URL) to your website.
- 2) The name you'd like to pop up for your site when the mouse rolls over your image.
- 3) A jpg image you would like to display for your site on ECC's site with your name in the image. The image must be a height of 180px and a width of 100px min to 260px max. Resolution of 72ppi. Make sure your image is within the required size.

There is a limit of one website (one image and one URL) per member. It will be shown on the ECC site under Web Sites of Members.

If you already have a site shown on ECC but would like to change it, please contact Rod Troch at the above e-mail address.

ECC AFFILIATION NEWS

PHOTOGRAPHIC SOCIETY OF AMERICA



Membership

For information on becoming a PSA member go to <http://www.psa-photo.org> and click on Membership. Information on annual dues and benefits is available there.

Annual Conference

Mark your calendar! This year's PSA Conference will be held in San Francisco, CA from Sunday, September 16th through Saturday, September 22nd. Featured speakers will include Julieanne Kost, Stephen Johnson and Robert Hughes. A variety of classes and workshops are scheduled, including several new two- and three-day classes. Tours will be conducted on Sunday, Monday and Tuesday. Other features include print exhibitions, a product showcase, and over 50 programs.

BULLETIN BOARD



PRINTS FOR CAMERA CLUB COMPETITIONS:

\$6.00 for anything that will fit on a 13" x 19" sheet of paper.

For instructions, send an e-mail to: CraigLewis@mac.com

ECC MEMBERS—

Do you have a photography-related item or service you want to sell, purchase, give away or provide? Send your bulletin board postings to Brenda Frezeman at b.frezeman@yahoo.com.